



Jubilee Platinum

Colin Bird

CEO



Presentation to Mines & Money London 2009

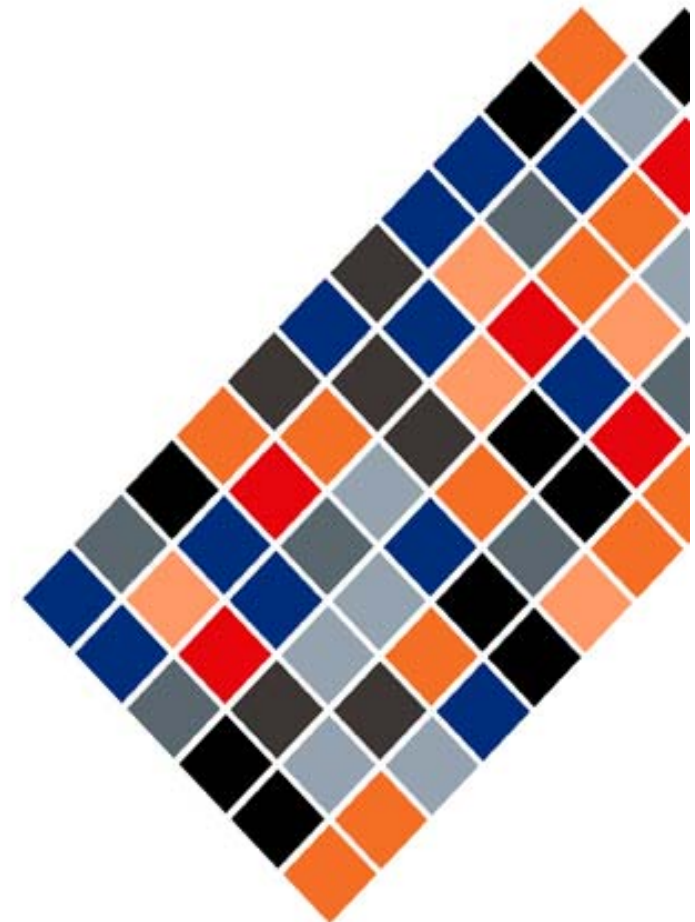
1 & 2 December 2009

THE ENLARGED COMPANY



A 'Total Capability' Company

www.jubileeplatinum.com



Jubilee 
Platinum

Private and confidential



Disclaimer



IMPORTANT NOTICE

No representation or warranty, express or implied, is given by Jubilee Platinum plc, as to the fairness, accuracy or completeness of the information or opinions contained in this document and no liability whatsoever is accepted for any loss howsoever arising from any use of this document or its contents or otherwise in connection herewith.



A 'Total Capability' Company

The enlarged 'Total Capability' Company



- **Flagship Tjate Project**
 - attributable **16Moz 6PGE*+Au** (SAMREC Code), first mine
 - attributable **44Moz 6PGE+Au** (targeted over total area**)
- **ConRoast**
 - proven processing route
 - lower capital, energy efficient and environmentally friendly
- **Australian Nickel Projects**
- **Short-, medium- and long-term cash flows to emerge**
- **Targeting mid-cap sector**
- **Prospects**
 - ConRoast can process base metal projects globally
 - Meets SA platinum industry smelting requirements
 - Hydromet refining of smelt to produce high value semi-refined PGEs
 - Combined company has near total capability
 - Australian nickel projects
 - **164 million tonnes** in surface tailings containing **485 000 tonnes** nickel

*Platinum Group Elements ** before geological losses

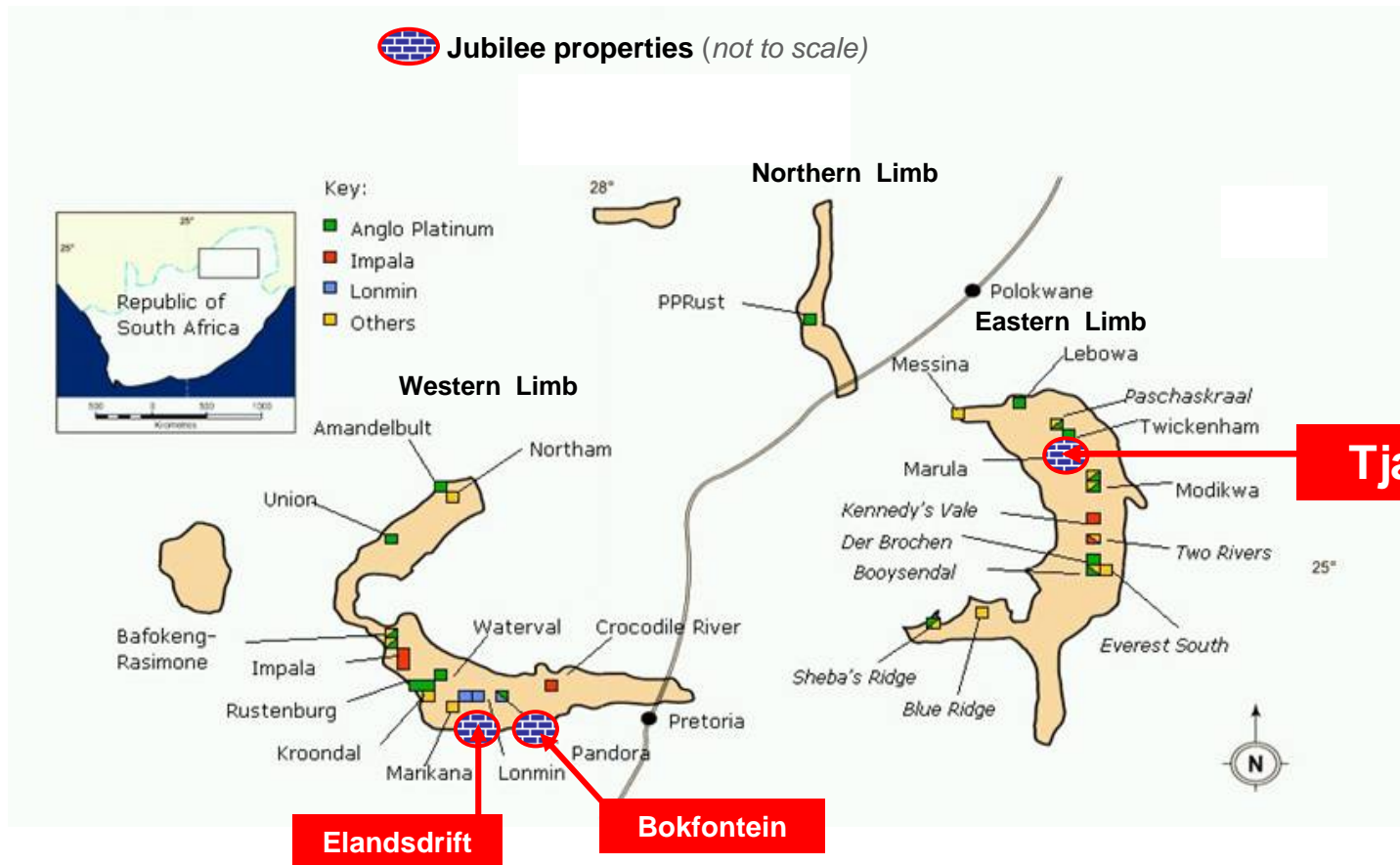
A 'Total Capability' Company

Mission

- **Short-term cash flow** [± 1 month]
 - ConRoast operations resumed
 - Feed source converter slag, mine fines, UG2 concentrate
 - furnace 3.2MW (4MVA), 2 200 tpm, plus pilot hydromet refining
- **Medium-term cash flow** [± 6 month]
 - Additional feed surface tailings and “revert” tailings
 - Bigger DC furnace install 8MW (10MVA) 6 000 tpm
 - Develop group potential treat other junior’s PGE concentrates
- **Long term cash flow** [± 18 month]
 - Develop Tjate total capability - produce semi-refined PGEs, Ni, Cu
 - Nickel Australia 485 000t Ni metal in surface tailings



The Bushveld Complex



Map reproduced with permission of Johnson Matthey

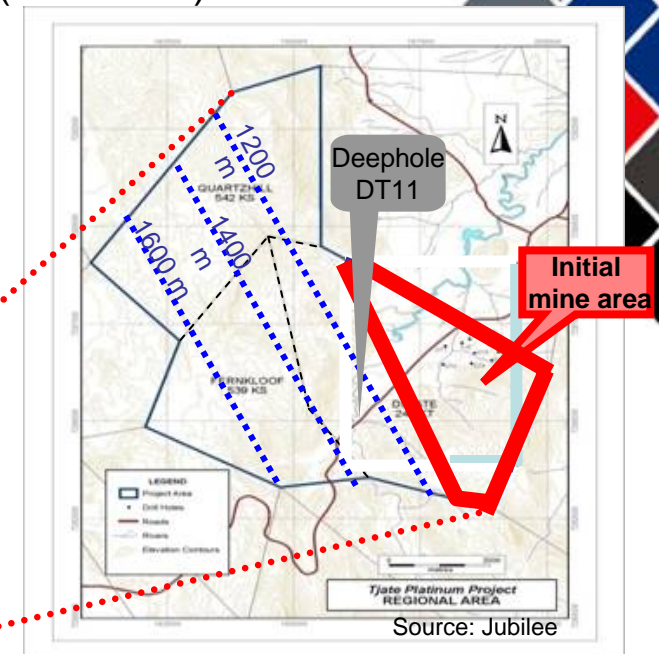
A 'Total Capability' Company

Tjate: location and project area

- Three contiguous farms 5 143ha
- Down dip of Implats' Marula, Angloplats' Twickenham mines
- Merensky grade 4.7g/t (3PGE+Au) over 110 cm reef thickness (SAMREC)
- UG2 grade 5.7g/t (3PGE+Au) over 124 cm reef thickness (SAMREC)
- Prill splits similar to average eastern Bushveld
- Targeted resources of 70Moz (6PGE+Au)* on three Tjate farms

* before geological losses

Tjate Project location in eastern limb of BC



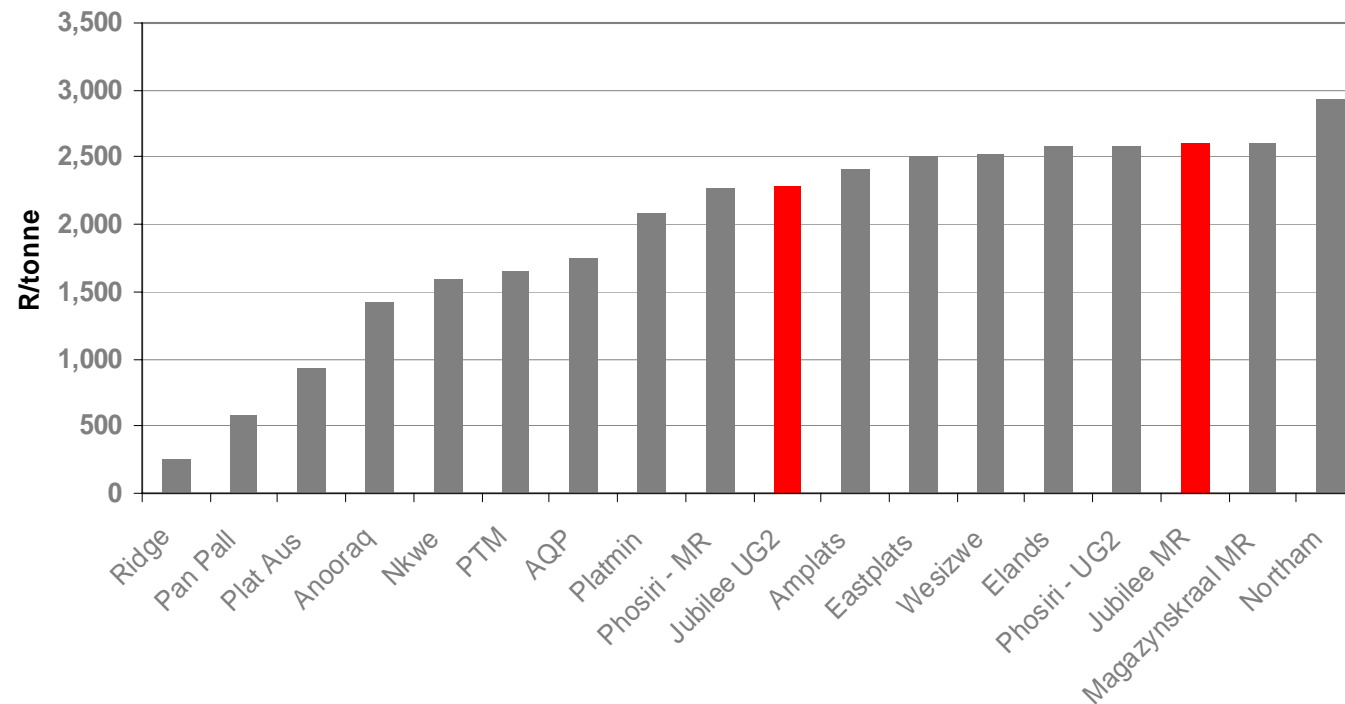
Merensky depth

.....

Jubilee by comparison



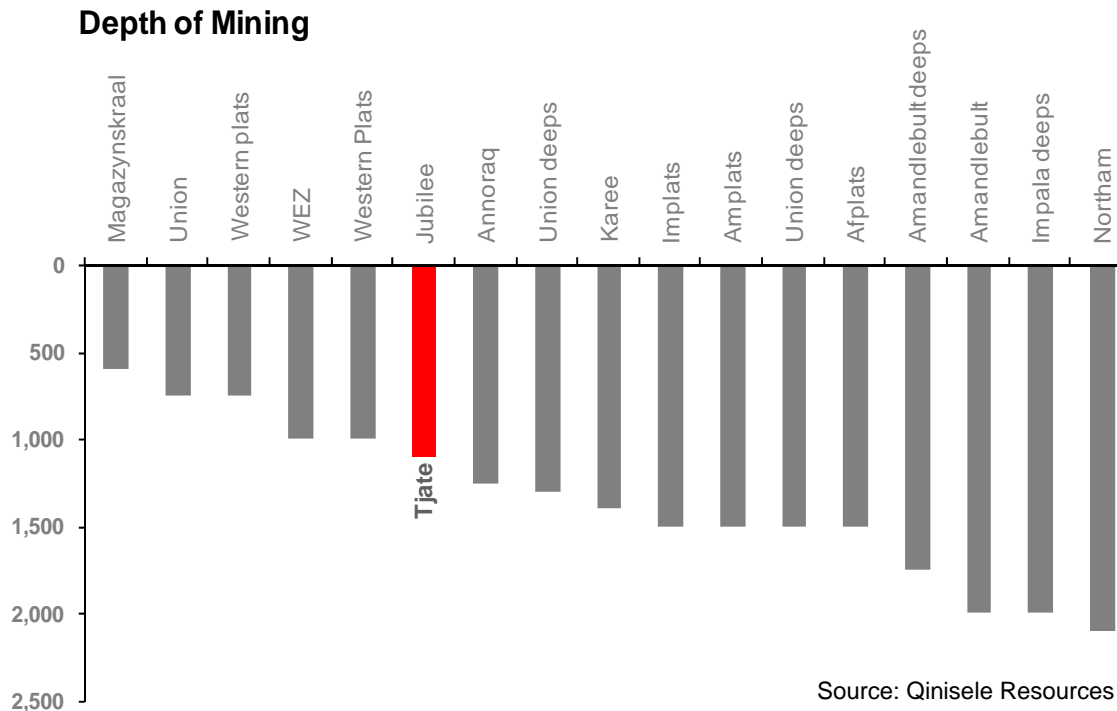
Contained value per tonne ore



Source: Qinisele Resources based on 15 March spot prices

A 'Total Capability' Company

Jubilee by comparison, cont'd



- The depth of 600m to 1 200m of the initial development compares favorably with mainstream operations which currently average depths of around 1 400m
- Majors' new shafts averaging 1 800 to 2 200m depth

A 'Total Capability' Company

Tjate Mineral Resource estimate (SAMREC)



Classification	Tonnes Million	3PGE+Au* g/t	3PGE+Au* Million oz
Indicated	11 561 359	5.28	1.964
Inferred	120 919 133	5.24	20.365
Total	132 480 493	5.24	22.329

Reef	Tonnes Million	Width m	3PGE+Au g/t	3PGE+Au Million oz
Merensky	56 273 224	1.10	4.66	8.429
UG2	76 207 269	1.24	5.67	13.900

The world's largest undeveloped block of defined platinum ore

*3PGE: platinum, palladium, rhodium Au: gold

A 'Total Capability' Company

Tjate: scoping study on initial development



Key assumptions – Initial development (15% of total resources – Merensky only)

ROM grade	5.0g/t (3PGE+Au); 0.22% Ni; 0.13% Cu
Resource	47m tonnes from 600m to 1 100m
Production	335 000 oz per annum (3PGE+Au)
Life of Mine	20 years (full production)
Throughput	200 000 t/month
Operating cost	R350/tonne ore
NPV	\$1.2 BILLION AT 5% DISCOUNT



Tjate valuation

Case	Pt price \$/oz	Basket \$/oz	NPV (\$m) @ Real rate			
			5%	7.5%	10%	12.5%
Base	1300	1137	1 200	820	580	400
>Base	1500	1255	1 400	970	690	490
> Base	1700	1373	1 600	1 100	790	570

A 'Total Capability' Company

Tjate: scoping study on initial development



Key assumptions – Initial development (15% of total resources – Merensky only)

ROM grade	5.0g/t (3PGE+Au); 0.22% Ni; 0.13% Cu
Resource	47m tonnes from 600m to 1 100m
Production	335 000 oz per annum (3PGE+Au)
Life of Mine	20 years (full production)
Throughput	200 000 t/month
Operating cost	R350/tonne ore
NPV	\$1.2 BILLION AT 5% DISCOUNT

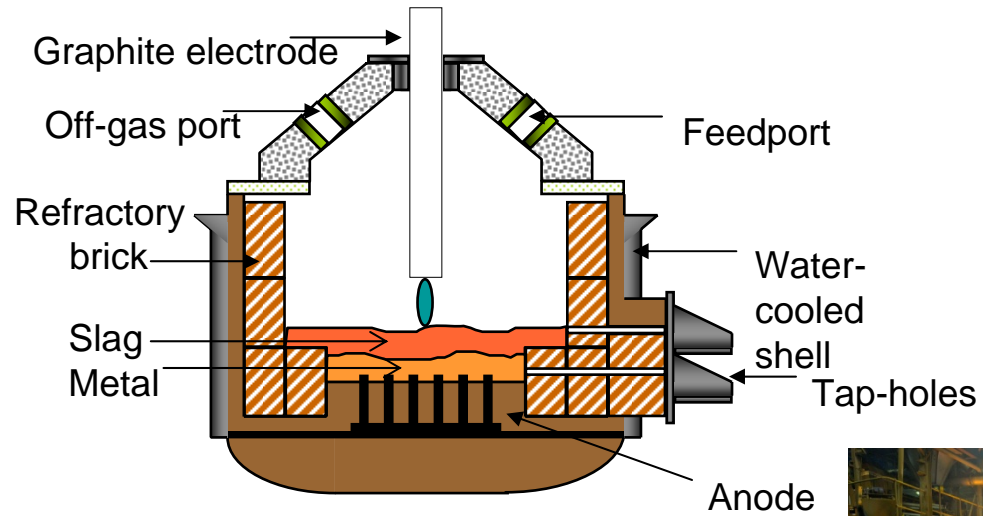


Tjate valuation

Case	Pt price \$/oz	Basket \$/oz	NPV (\$m) @ Real rate			
			5%	7.5%	10%	12.5%
Base	1300	1137	1 200	820	580	400
>Base	1500	1255	1 400	970	690	490
> Base	1700	1373	1 600	1 100	790	570

A 'Total Capability' Company

CONROAST



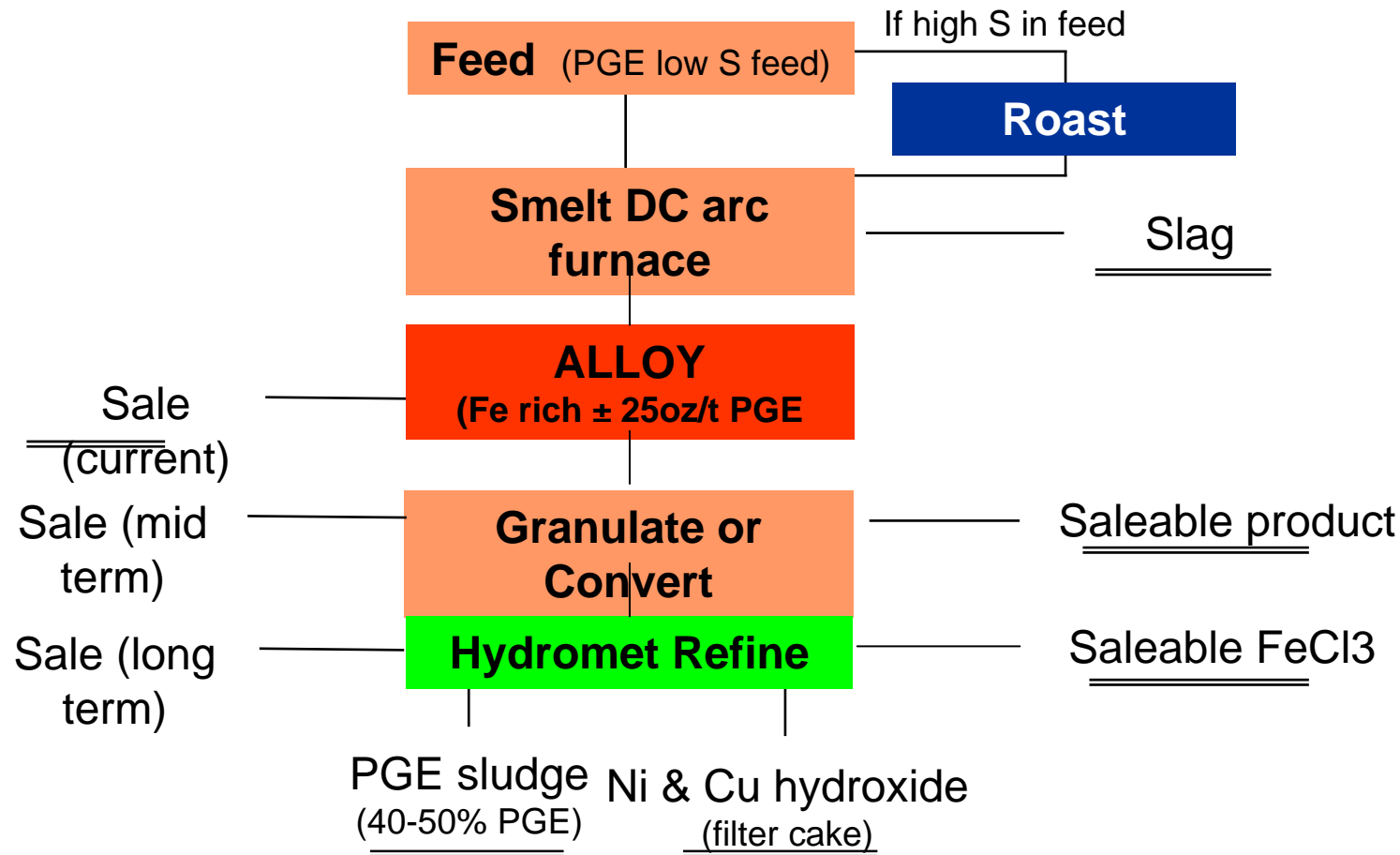
Why ConRoast?

- Merensky reef (low chrome) depleting faster than UG2
- Increased mining of UG2 reef (high chrome) by majors and new producers
- Change from low to high chrome ore threat to current platinum smelting process viability
- Majors, juniors dependent on finding smelting partner to treat, refine their concentrate
- Majors imposing stringent chrome penalties on toll treating to protect their plants



A 'Total Capability' Company

ConRoast process flowsheet (simplified)



ConRoast: unique selling points

Green	<ul style="list-style-type: none"> • Solves SO₂ environmental problem >98% S captured
Safety	<ul style="list-style-type: none"> • Avoids corrosive high-temperature matte phase • Tolerant high-temperature operation
Energy efficient	<ul style="list-style-type: none"> • Good temperature control/distribution • No short circuiting between coke and electrode • No electrode contact with melt • Stabilises power supply
Metal recovery	<ul style="list-style-type: none"> • >98% PGE recovery to alloy
Flexibility	<ul style="list-style-type: none"> • Solves UG2 smelting problem • No limit on Cr₂O₃ (chrome) content in feed • Feed converter slags, mine fines, Merensky concentrate (with pre roast), revert tailings and dump tailings concentrates



Enlarged Company effects on Tjate Project

- **NO** toll treatment
- Ownership of metal
- Independent of majors
- Increase in metal payable to Tjate
- Major increase in project NPV



A 'Total Capability' Company

Effect of ConRoast and leach on Tjate scoping study economics

Key assumptions – Initial development (15% of total resources – Merensky only)		Effect of ConRoast and leach
ROM grade	5.0g/t (3PGE+Au); 0.22% Ni; 0.13% Cu	No change
Resource	47Mt from 600m to 1 100m	No change
Production	335 000oz per annum (3PGE+Au)	No change
Life of Mine	20 years (full production)	No change
Throughput	200 000 tpm	No change
Operating cost	R350/tonne ore	R415/tonne ore
Capital cost		\$100 million ConRoast and leach plant
Payability for PGEs	82%	96% (proven recovery)
Payability Base metal	70%	96% (proven recovery)
Chrome penalty	Yes (if UG2 treated with MR)	No
NPV @ 5% discount	\$1.2 billion	\$1.7 billion



ConRoast agreement with Mintek



- Mintek holds patent on ConRoast process
- Sole and exclusive global licence option extended for life of patent (2020)
- Usage fee based on R/t smelted to increase during option period
- Requirement to operate 2 x 10MVA (8MW) furnace in 5 years



A 'Total Capability' Company



NICKEL AUSTRALIA - Nickel resources



- Estimated total **485 000t** of nickel metal mined and milled in surface tailings based on historic mill records - AMC Consultants
- Additional **522 082t** of hot nickel tailings from ongoing operations
- In-situ contained nickel metal value > **US\$9 billion** (at US\$19 000/tonne)

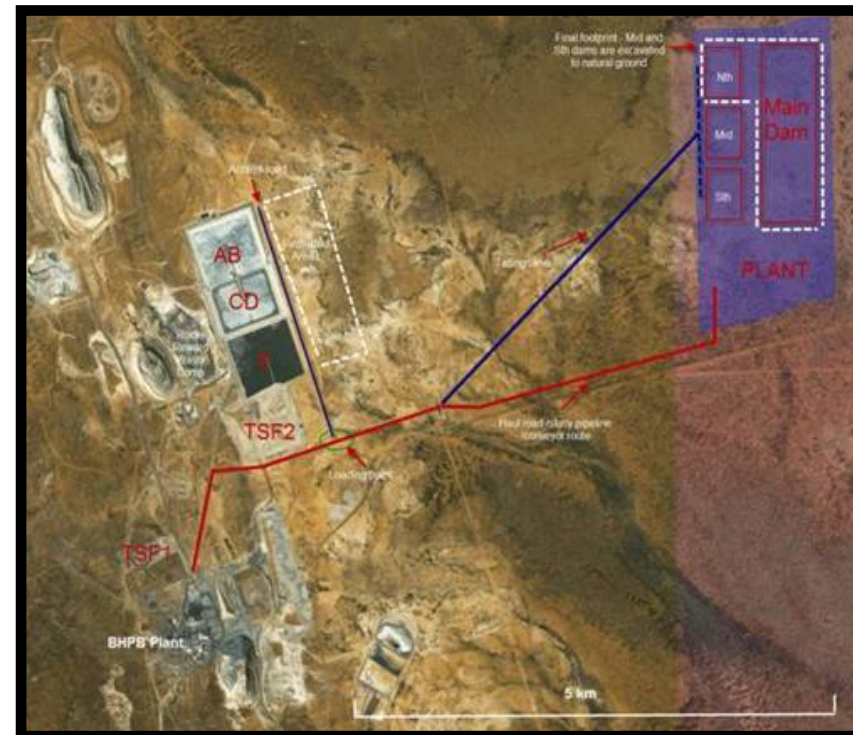


Deposit	Tonnes	Grade (%Ni)	Ni (Tonnes)
Leinster nickel sulphide tailings	29,610,000	0.46	135,000
<i>JORC Resource Estimate from CSA Australia Pty Ltd</i>			
Kambalda nickel sulphide tailings	32,640,757	0.41	132,452
<i>AMC Consultants Pty Ltd estimate based on historic mill records</i>			
Mt Keith nickel sulphide tailings	101,984,221	0.21	218,306
<i>AMC Consultants Pty Ltd estimate based on historic mill records</i>			

Many an optimist has become rich by buying out a pessimist

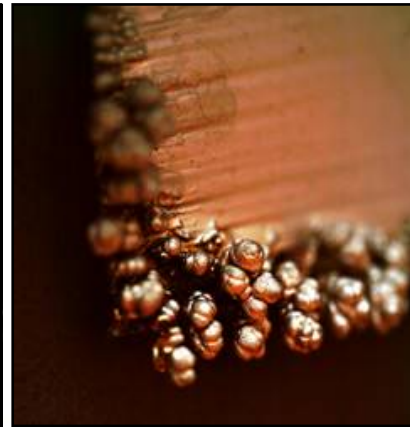
Leinster nickel tailings

- Large nickel sulphide resources in Western Australia
- Near established infrastructure and services capex savings
- Off-take agreement with BHP Billiton (BHPB)
- Proven proprietary process technologies
 - leaching and acid recycling depending on process route



Evolving nickel strategy

- Develop Kambalda
- Close proximity of Kambalda with Kalgoorlie Nickel Smelter (KNS) and Kalgoorlie
- Kambalda complements Leinster
- provides two separate stand-alone nickel production facilities
- Considerably lower capex required for Kambalda
- acid plant not required



From grave to ladle...

The Investment Case

- Short-term cash flow from proven existing ConRoast process facility
- Mid-term cash flow from dump re-treatment
Concentrating and Smelting
- Tjate to be developed
- Australian nickel evaluated - ready for development
- Mid-market capitalization target

Major upside/revaluation as projects and new business opportunities emerge

A 'Total Capability' Company

Management

Board	
Malcolm Burne	Non-executive Chairman
Dr. Mathews Phosa	Non-executive Deputy Chairman *
Colin Bird	Chief Executive Officer
Leon Coetzer	Executive Director *
Andrew Sarosi	Executive Director
Chris Molefe	Non-executive Director
Management	
Colin Bird	Chief Executive Officer
Leon Coetzer	Managing Director: Smelting and Refining *
Eduard Victor	Dump retreatment and Corporate
Andrew Sarosi	Technical Director

* To be appointed on takeover of Braemore becoming unconditional