



Western Lithium

James Hayter

Managing Director

Western Lithium

December 2009

WESTERN ^{WLC}
LITHIUM

Kings Valley Lithium Project

Cautionary Statement



This presentation contains projections and forward looking information that involve various risks and uncertainties regarding future events. Such forward-looking information can include without limitation statements based on current expectations involving a number of risks and uncertainties and are not guarantees of future performance of the Corporation. These risks and uncertainties could cause actual results and the Corporation's plans and objectives to differ materially from those expressed in the forward-looking information. Actual results and future events could differ materially from those anticipated in such information. These and all subsequent written and oral forward-looking statements are based on estimates and opinions of management on the dates they are made and expressly qualified in their entirety by this notice. The Corporation assumes no obligation to update forward-looking information should circumstances or management's estimates or opinions change.

Significant New Lithium Demand Growth



Major car makers are advancing electric cars



Get Plugged In.

Western Lithium

- One of the world's largest known lithium deposits
- Located in the U.S.
- Development stage project
- Excellent infrastructure
- Experienced team of mine builders
- Anticipated production timing coincides with rising demand
- Scalable project that can grow to meet market demand
- Pure play lithium investment



**Advancing Development of a North American Based
Reliable and Scalable Strategic Lithium Deposit to
Power Today's Hybrid/Electric Cars and Mobile Devices**

Western Lithium in Nevada



Get Plugged In.

A satellite-style map of North America, including the United States, Canada, and Mexico, with yellow outlines of the countries. The text "WESTERN LITHIUM CORPORATION" is overlaid in large white letters across the center of the map.

WESTERN LITHIUM CORPORATION

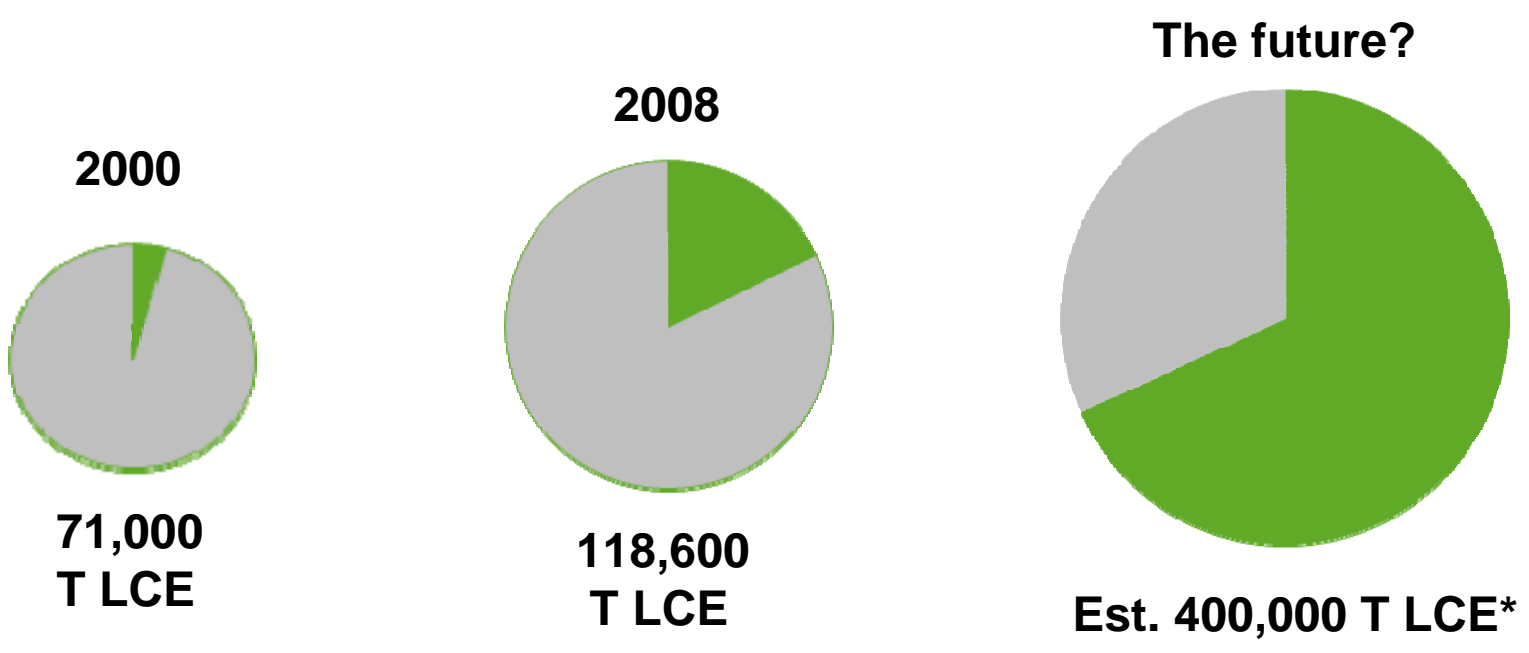
The logo for Western Lithium Corporation, featuring the word "WESTERN" in black, "LITHIUM" in green, and "WLC" in black, all within a white rectangular box. A black battery icon is positioned to the left of the word "LITHIUM".

WESTERN WLC
LITHIUM

Lithium – Near Term Growth Potential



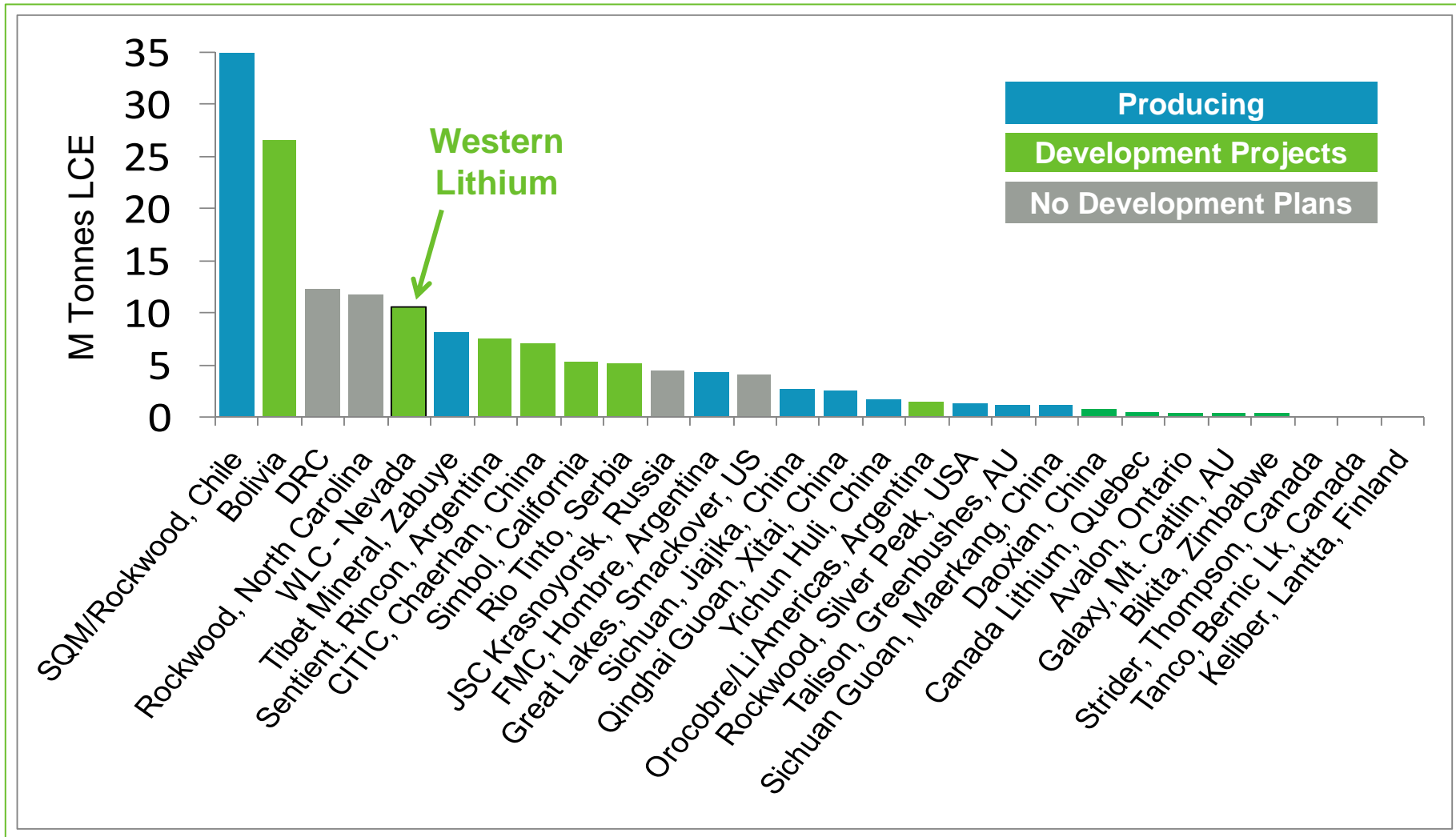
- Demand from Batteries
- Other Demand Sources



*Estimate based on 5% market growth and 10% EV adoption rate over 10 years.

Get Plugged In.

World Lithium Resources

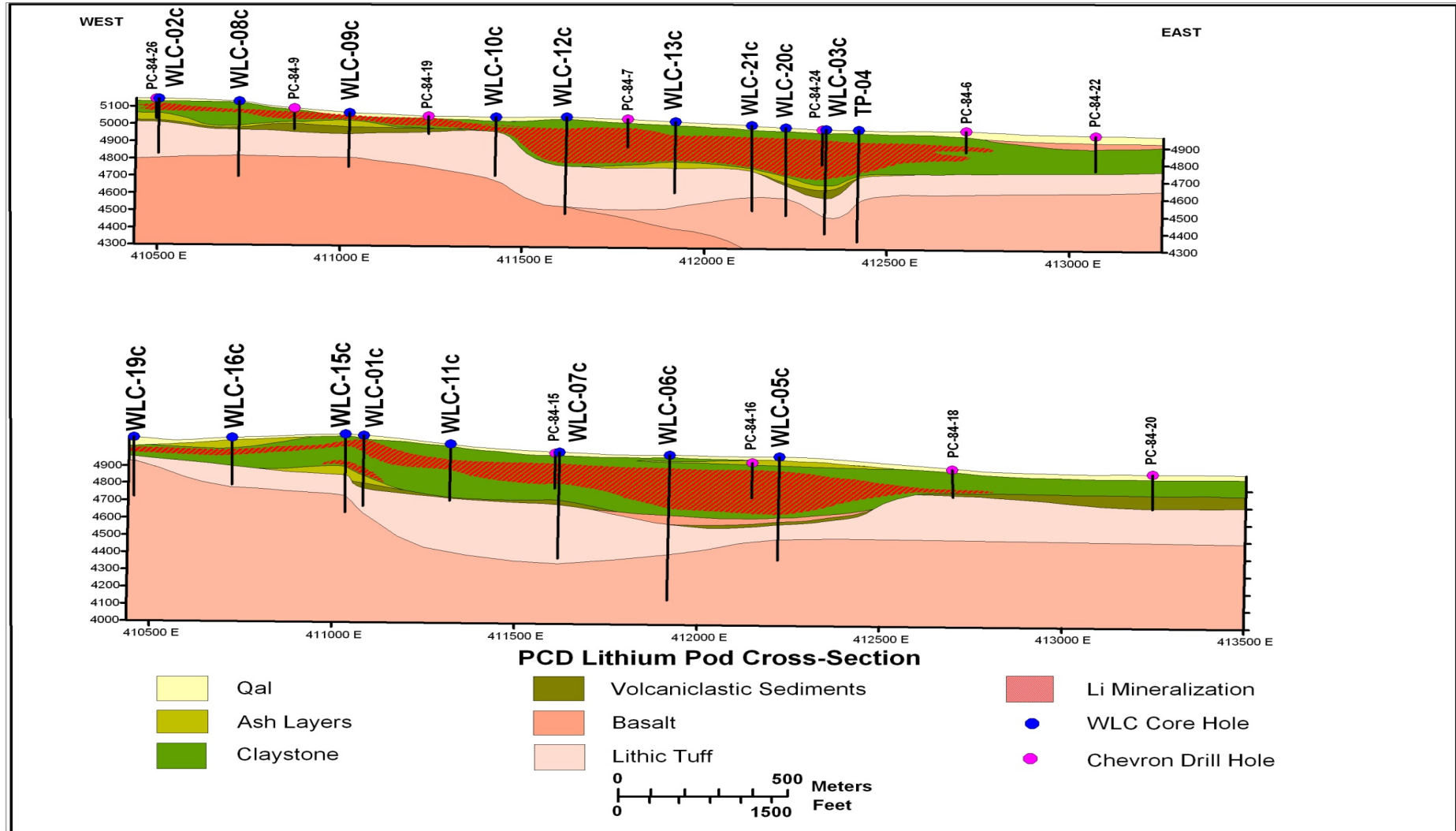


Source: Roskill Information Services Ltd., R. Keith Evans, National Research Council and Western Lithium estimates. Estimates are not NI 43-101 compliant.

Stage I (PCD) Lens



Stage I (PCD) Lens – Cross Section



Historical Process Engineering

US Geological Survey - 1970s

- Identified a rare lithium occurrence at Kings Valley

Chevron Resources - 1970s and early 1980s

- Geological delineation of historical lithium lenses
- Flow sheet development and economic analysis

US Bureau of Mines – 1980s

- Extractive metallurgical testing, economic studies and pilot plant

Western Lithium with Hazen Laboratories - 2007/2008

- Confirmatory testing of Chevron studies

Western Lithium with Kappes Cassiday Laboratory – 2008/2009

- Laboratory for process flow sheet development and ongoing testing

Western Lithium & URS Corporation - 2009

- Economic studies underway

Corporate Vision and Milestones



Developing a major scalable North American Lithium Carbonate supply in Nevada

Milestones:

Schedule

Resource delineation drilling of Stage I (PCD) Lens – 51 holes	Q3/08
Exploration drill testing Stage II to V – 5 holes	Q4/08
Metallurgical testing - Hazen and KCA laboratories	ongoing
NI 43-101 mineral resource report on Stage I (PCD)	Q1/09
Scoping Study	Q4/09
Permitting and Environmental Studies	ongoing
Prefeasibility, pilot plant and additional drilling results	2010
Targeted Start of 25,000 Tonne Annual LCE Production	
2013	

Western Lithium Corporation



**Advancing Development of a North American Based
Reliable and Scalable Strategic Lithium Deposit to
Power Today's Hybrid/Electric Cars and Mobile Devices**

- \$22 Million Cash (Cdn)/No Debt
- 81 Million Shares Outstanding
- 109 Million Fully Diluted
- 24% owned by Western Uranium
- Market Cap. \$124 million (Cdn)



Directors and Officers

Edward Flood: Chairman, Co-founder and Chairman of Western Uranium Corporation and Western Lithium Corporation. Managing Director Haywood Securities London, over 35 years experience in mining industry including Deputy Chairman of Ivanhoe Mines.

William Haldane: Director, Founder of Haldane Diogenes, an international executive recruiting firm specializing in executive level searches in the mining, pulp and paper, pharmaceuticals, and consumer goods sectors.

Pamela Klessig: Director, Co-founder, CEO & President of Western Uranium Corporation, 28 years experience in global mineral exploration and development.

John Macken: Director, CEO & President of Ivanhoe Mines, served as Freeport McMoran Copper and Gold, Senior VP of Strategic Planning and Development and as EVP and General Manager at Freeport's Grasberg mining complex.

William Sheriff: Director, Co-founder and Chairman of Energy Metals Corporation, which was acquired by Uranium One for \$1 billion. Leading prospect developer in the western US, with 27 years experience in mineral exploration and company development.

Jay Chmelauskas: **President**, Geological engineer with 15 years international experience in the engineering, mining and chemical industries including the exploration, development and sale of one of China's largest gold mines.

Dennis Bryan: **Senior Vice President**, Geological engineer with 35 years experience in industrial minerals exploration, evaluation and development.

Eduard Epshtein: **CFO**, CFO of Western Lithium, Western Uranium, Southern Arc Minerals and Canada Energy Partners.

Cindy Burnett: **VP IR**, Previous mining, energy and chemical IR experience with Skye Resources, Ivanhoe Energy and NOVA Chemicals.

WESTERN ^{WLC}
LITHIUM

www.westernlithium.com

Email: info@westernlithium.com

Western Lithium Investor Relations: 1-604-639-2144

Exchange Symbol: TSX-V: WLC